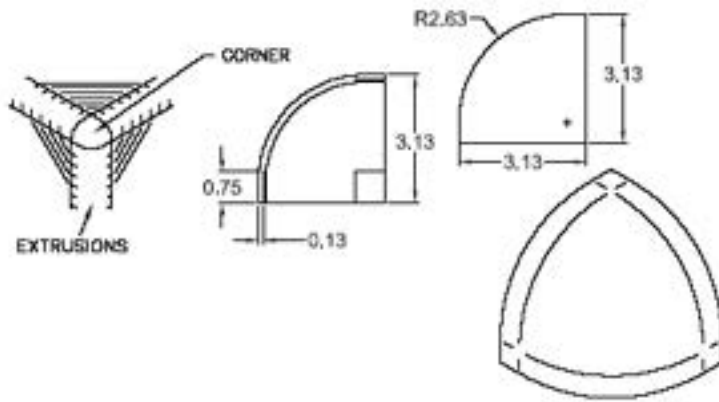


Modular Corners

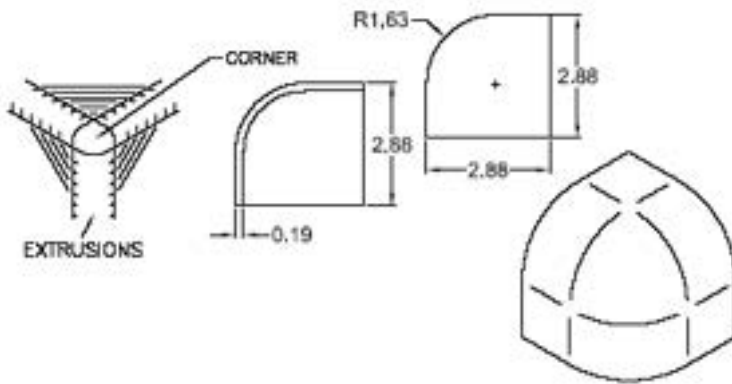
MC0001



MC0001 Modular Corner (Weld in)

- 1) Finish: Ground and wheel-a-brated.
- 2) Purpose: To eliminate the need for mitering corners of extrusions.

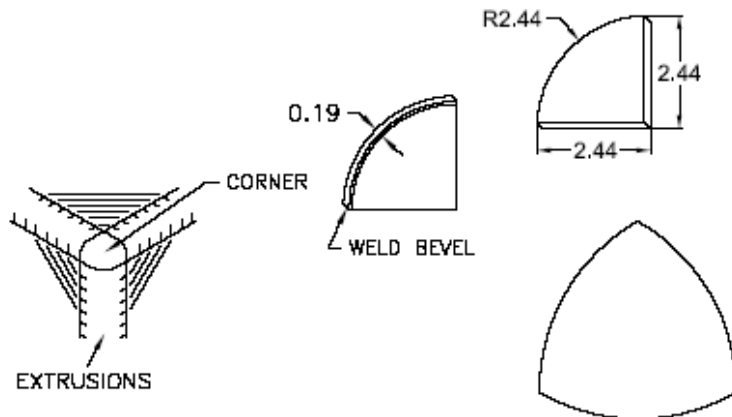
MC0003



MC0003 Modular Corner (Weld In)

- 1) Finish: Ground and wheel-a-brated.
- 2) Purpose: To eliminate the need for mitering corners of extrusions.

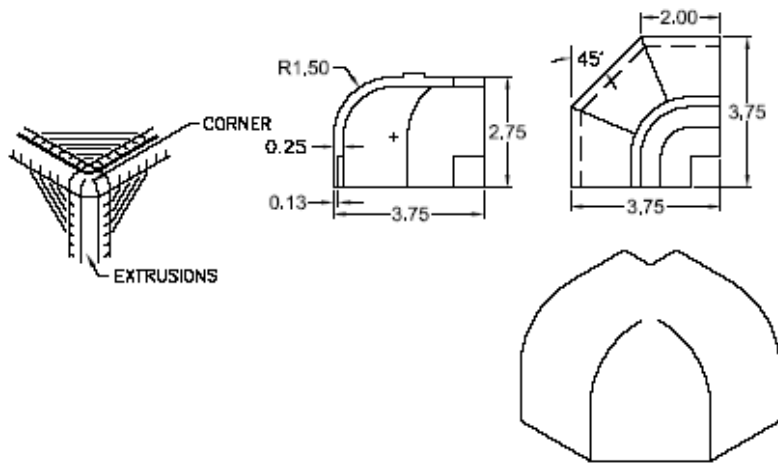
MC0005



MC0005 Modular Corner (Weld in)

- 1) Finish: Ground and wheel-a-brated.
- 2) Purpose: To eliminate the need for mitering corners of extrusions.

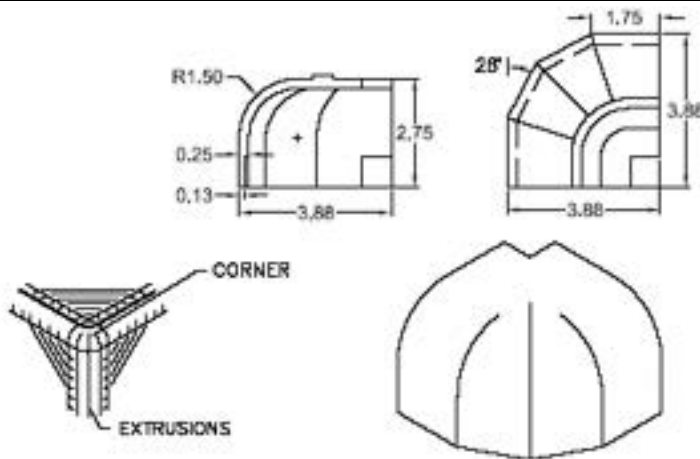
MC0010



MC0010 Modular Corner (Weld in)

- 1) Finish: Ground and wheel-a-brated.
- 2) Purpose: To eliminate the need for mitering corners of extrusions.

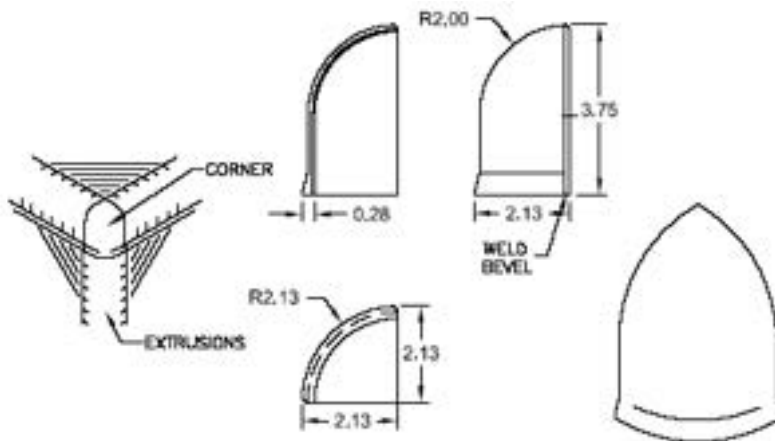
MC0011



MC0011 Modular Corner (Weld In)

- 1) Finish: Ground and wheel-a-brated.
- 2) Purpose: To eliminate the need for mitering corners of extrusions.

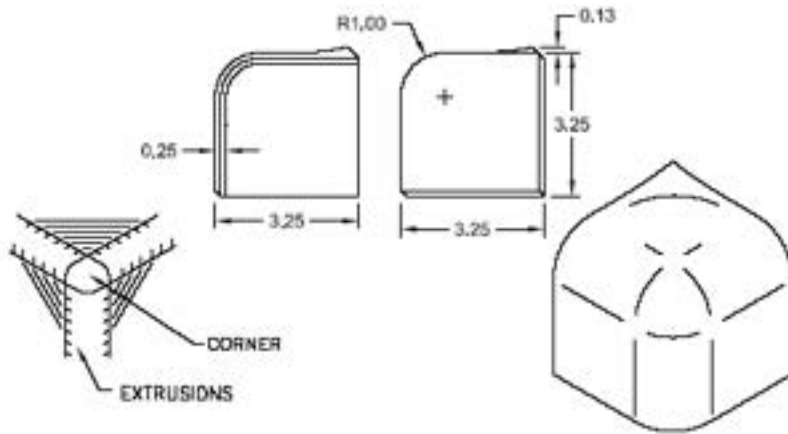
MC0017



MC0017 Modular Corner (Weld in)

- 1) Finish: Ground and wheel-a-brated.
- 2) Purpose: To eliminate the need for mitering corners of extrusions.

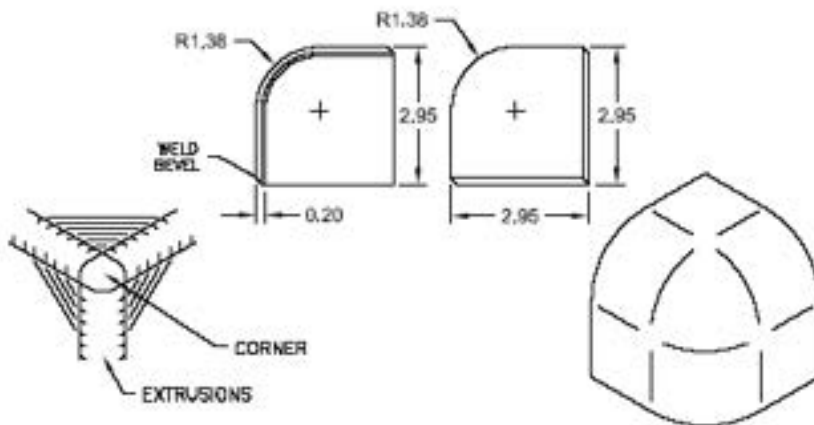
MC0021



MC0021 Modular Corner (Weld in)

- 1) Finish: Ground and wheel-a-brated,
- 2) Purpose: To eliminate the need for mitering corners of extrusions.

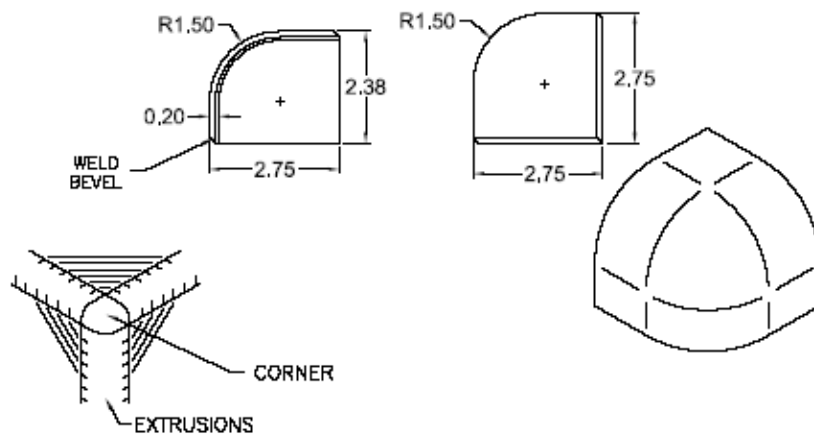
MC0023



MC0023 Modular Corner (Weld In)

- 1) Finish: Ground and wheel-a-brated.
- 2) Purpose: To eliminate the need for mitering corners of extrusions.

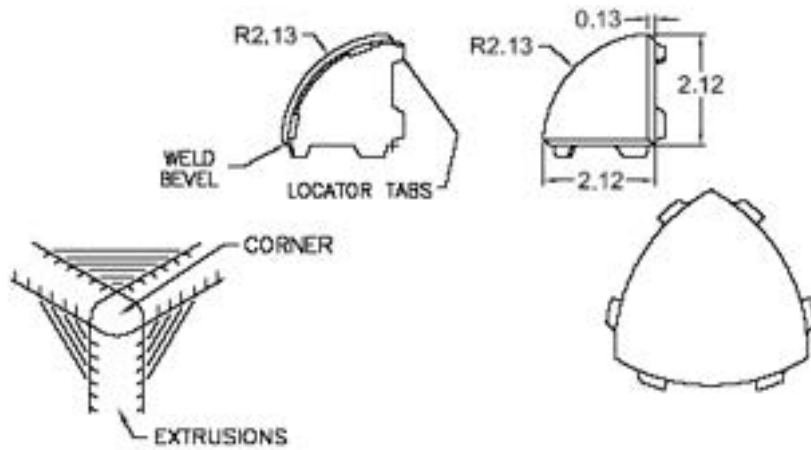
MC0026



MC0026 Modular Corner (Weld in)

- 1) Finish: Ground and wheel-a-brated.
- 2) Purpose: to eliminate the need for mitering corners of extrusions.

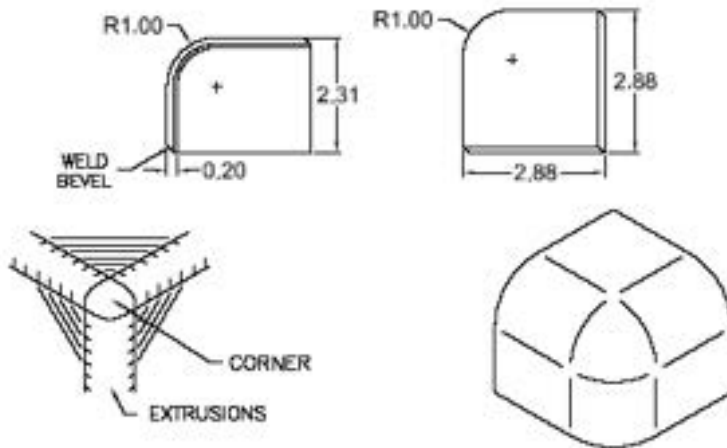
MC0027



MC0027 Modular Corner (Weld in)

- 1) Finish: Ground and wheel-a-brated.
- 2) Purpose: to eliminate the need for mitering corners of extrusions.

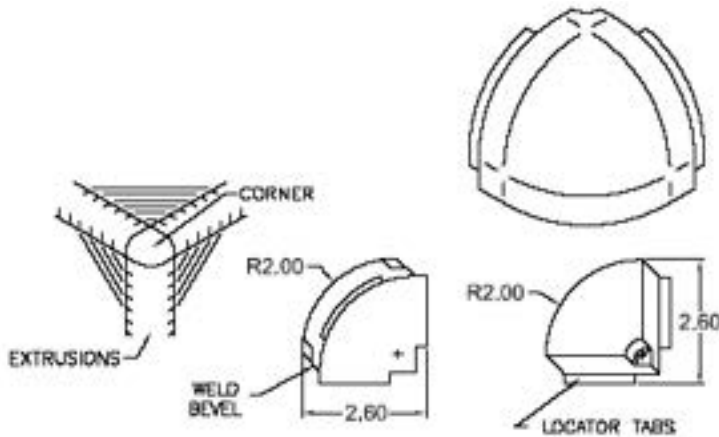
MC0028



MC0028 Modular Corner (Weld In)

- 1) Finish: Ground and wheel-a-brated.
- 2) Purpose: to eliminate the need for mitering corners of extrusions.

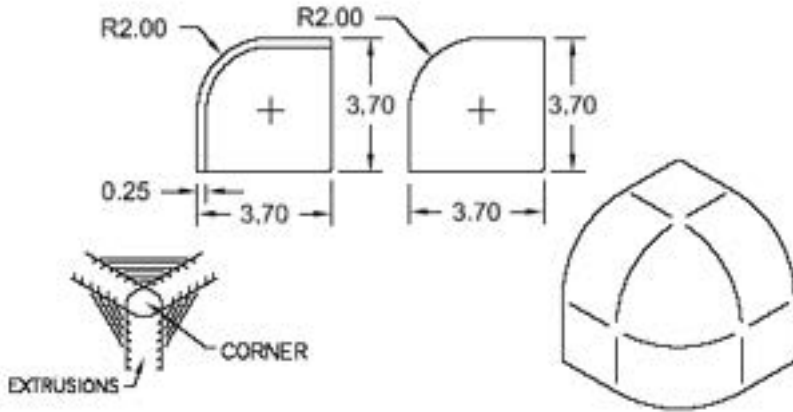
MC0033



MC0033 Modular Corner (Weld in)

- 1) Finish: Ground and wheel-a-brated.
- 2) Purpose: to eliminate the need for mitering corners of extrusions.

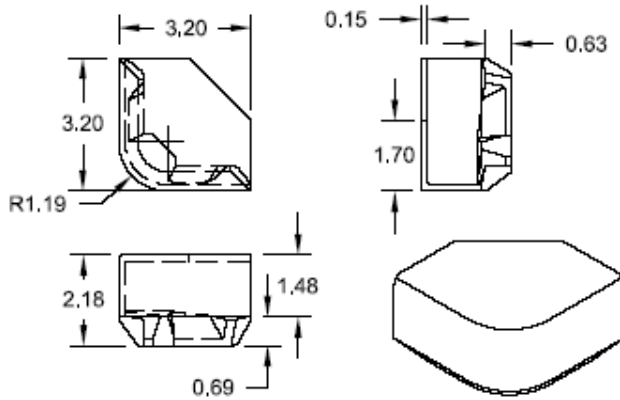
MC0037



MC0037 Modular Corner (Weld in)

- 1) Finish: Ground and wheel-a-brated.
- 2) Purpose: to eliminate the need for mitering corners of extrusions.

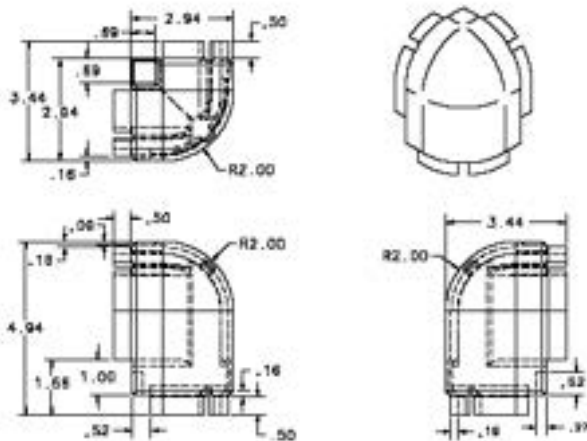
MC0052



MC0052 Horizontal Corner

- 1) Finish: Polished.

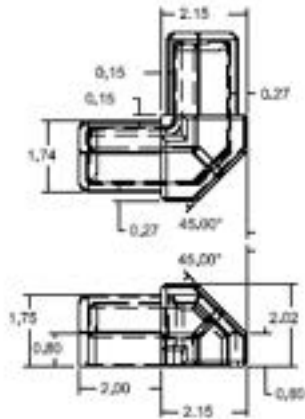
MC0061



MC0061 Modular Corner (Weld in)

- 1) Finish: Ground and wheel-a-brated.
- 2) Purpose: to eliminate the need for mitering the corners of extrusions.

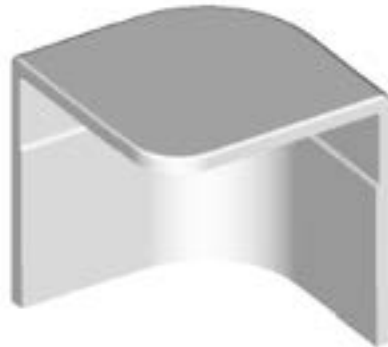
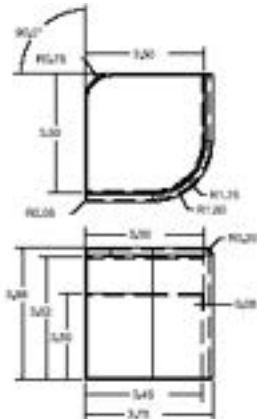
MC0063



MC0063 Modular Corner

- 1) Finish: Ground and wheel-a-brated.
- 2) Purpose: to eliminate the need for mitering the corners of extrusions.

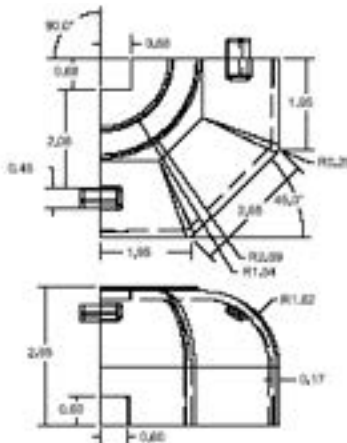
MC0071



MC0071 Modular Corner

- 1) Finish: wheel-a-brated.
- 2) Purpose: to eliminate the need for mitering the corners of extrusions.

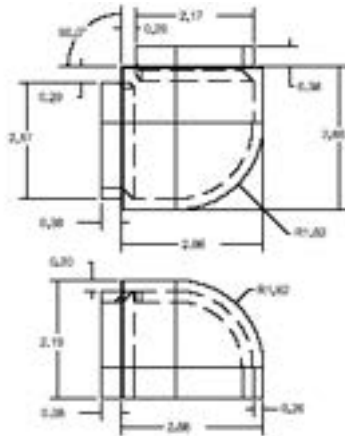
MC0075



MC0075 Corner Cover (Weld in)

- 1) Finish: Ground and wheel-a-brated.
- 2) Purpose: to eliminate the need for mitering the corners of extrusions.

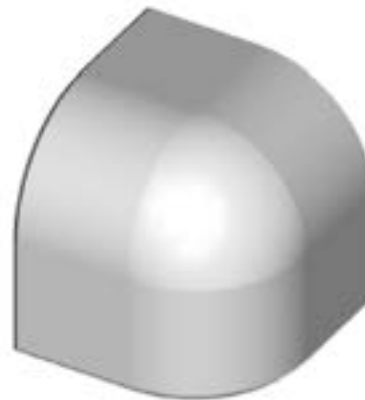
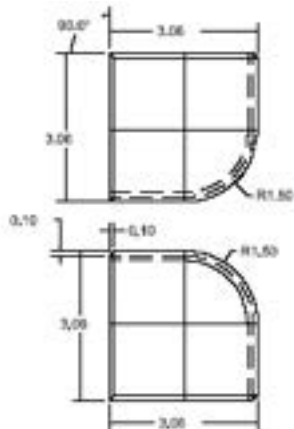
MC0076



MC0076 Corner Cover (Weld in)

- 1) Finish: Ground and wheel-a-brated.
- 2) Purpose: to eliminate the need for mitering the corners of extrusions.

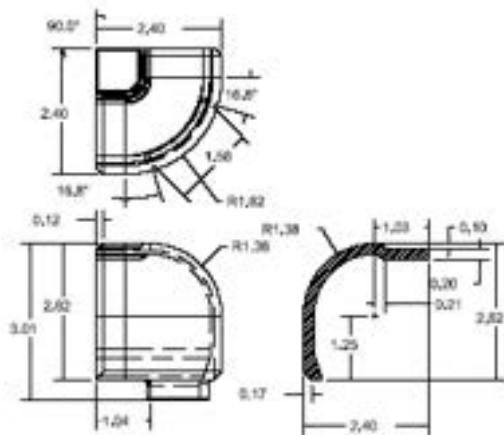
MC0077



MC0077 Corner Cover (Weld in)

- 1) Finish: Ground and wheel-a-brated.
- 2) Purpose: to eliminate the need for mitering the corners of extrusions.

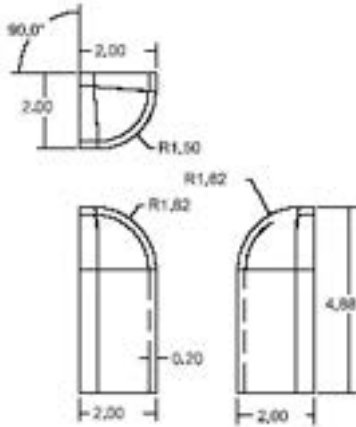
MC0079



MC0079 Corner Cover (Weld in)

- 1) Finish: VFM.
- 2) Purpose: to eliminate the need for mitering the corners of extrusions.

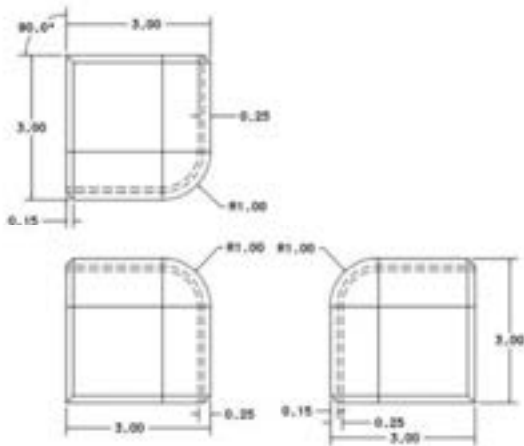
MC0080



MC0080 Corner Cover (Weld in)

- 1) Finish: Wheel-a-brated.
- 2) Purpose: to eliminate the need for mitering the corners of extrusions.

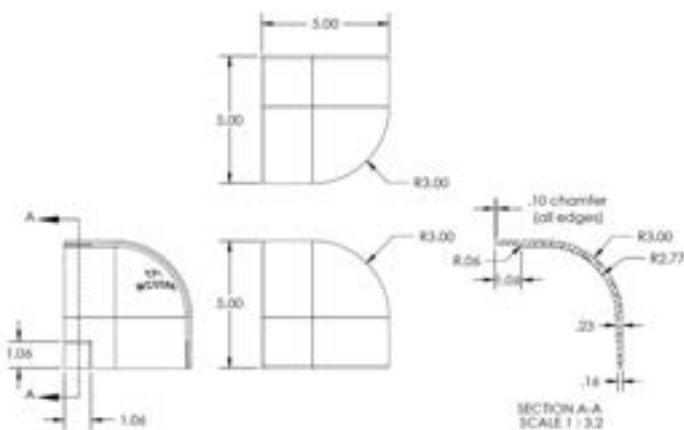
MC0083



MC0083 90d. Modular Corner Cap

- 1) Finish: wheel-a-brated.

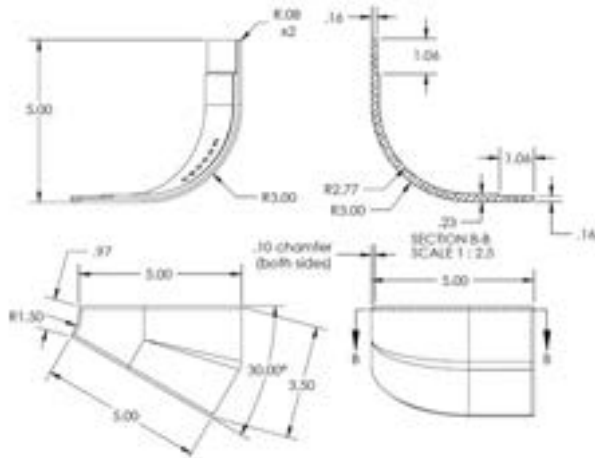
MC0089



MC0089 90d., R3.0 Corner Casting

- 1) Finish: wheel-a-brated or ball-burnished.

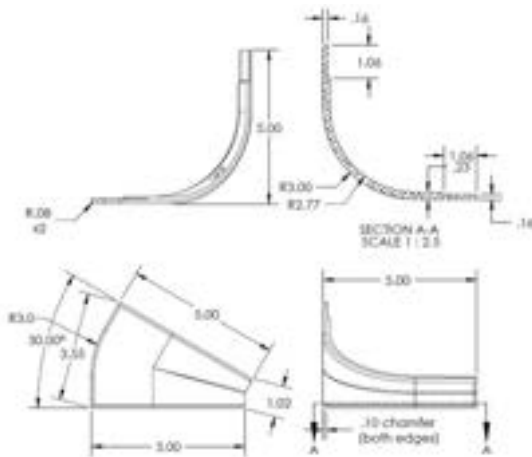
MC0090



MC0090 30d., R3.0 Corner Casting

1) Finish: wheel-a-brated or ball-burnished.

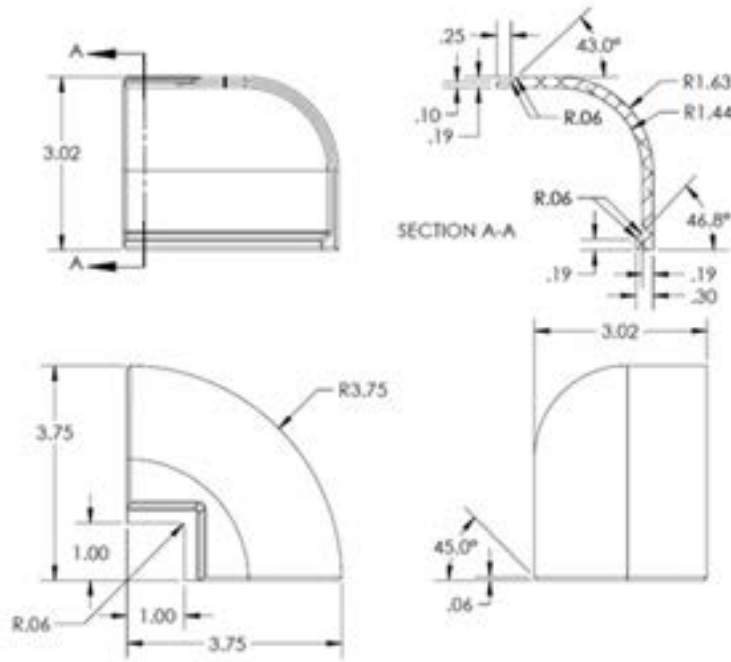
MC0091



MC0091 30d., R3.0 Corner Casting

1) Finish: wheel-a-brated or ball-burnished.

MC0094

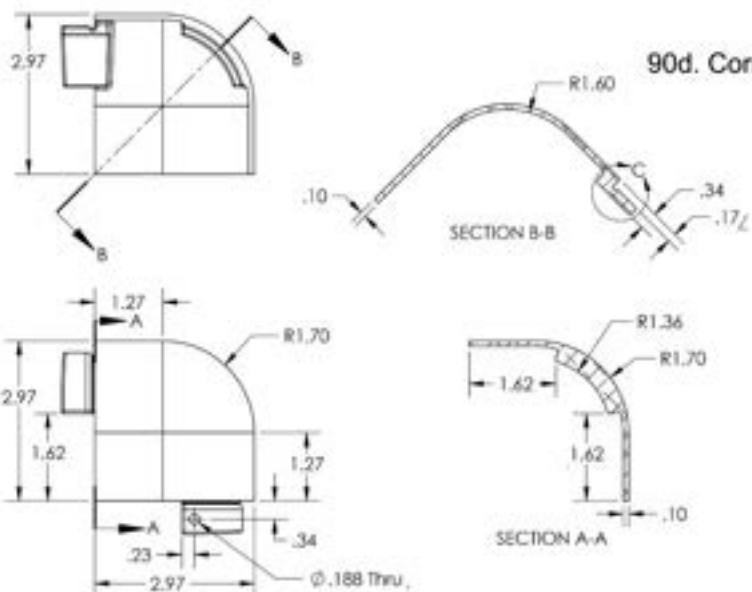


MC0094 90d. Corner Casting



1) Finish: wheel-a-brated

MC0096



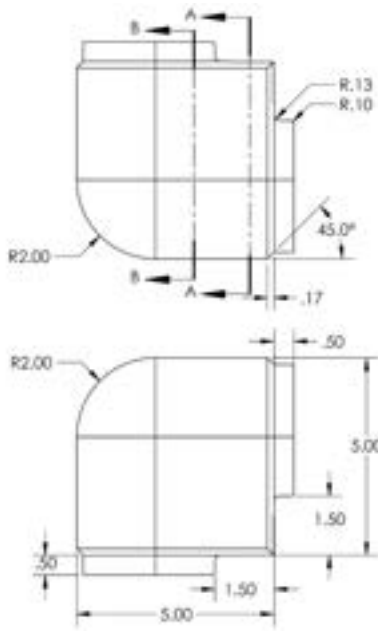
MC0096 90d. Corner Cap Casting w/ tabs x2



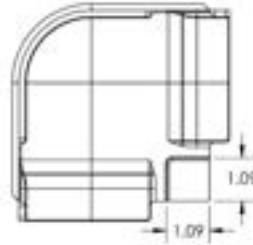
1) Finish: vfm

MC0097

MC0097 90d. Corner Cap Casting

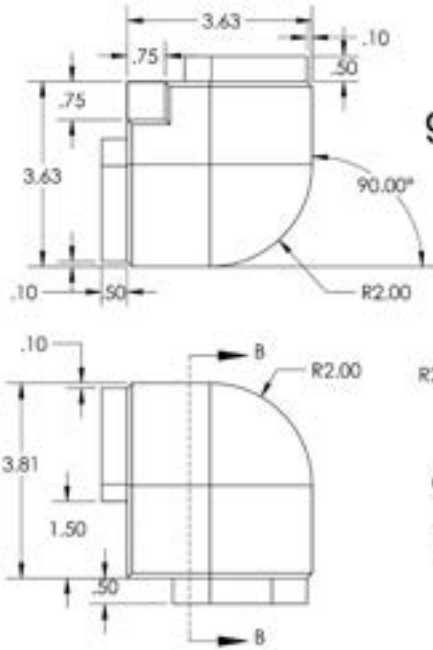


1) Finish: wheel-a-brated.



MC0098

MC0098 90d. Corner Cap Casting



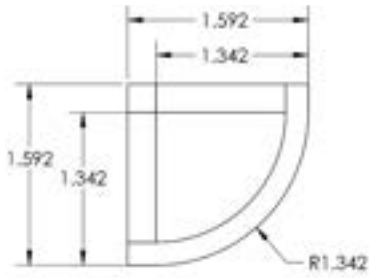
1) Finish: ball-burnished.



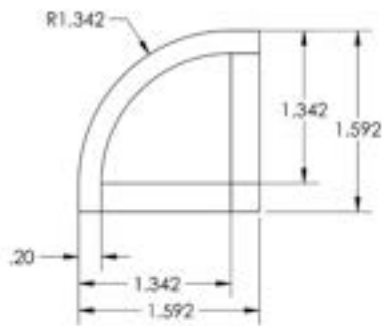
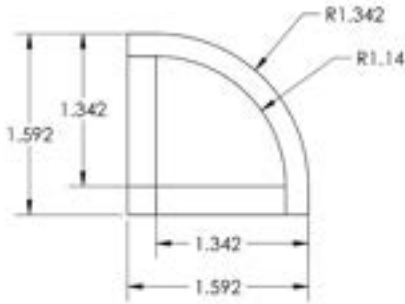
MC0099

MC0099

90d. Corner Cap Casting



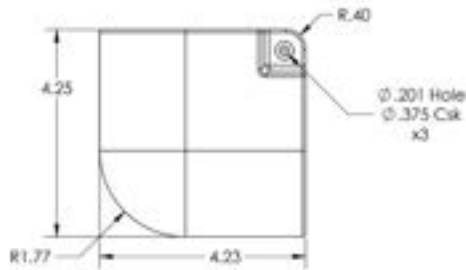
1) Finish: ball-burnished.



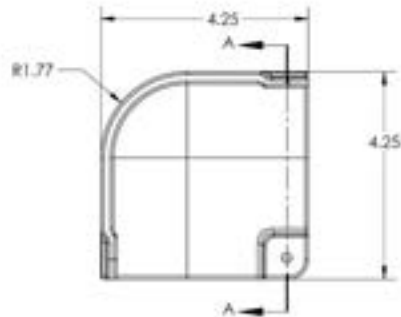
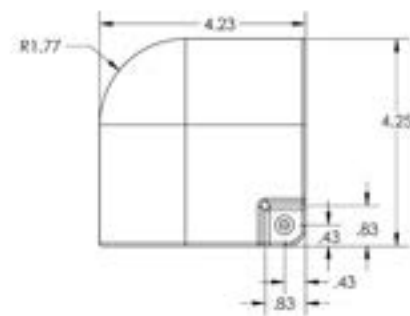
MC0101

MC0101

90d. Corner Cap Casting

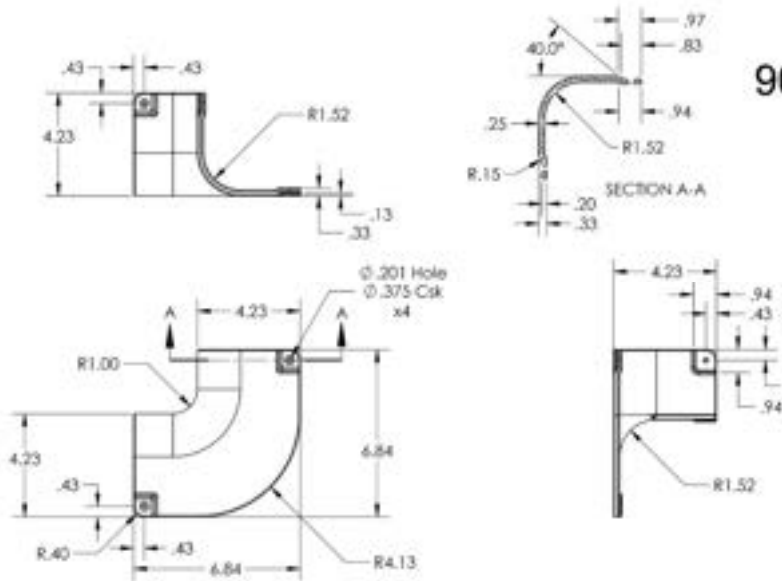


1) Finish: polished.



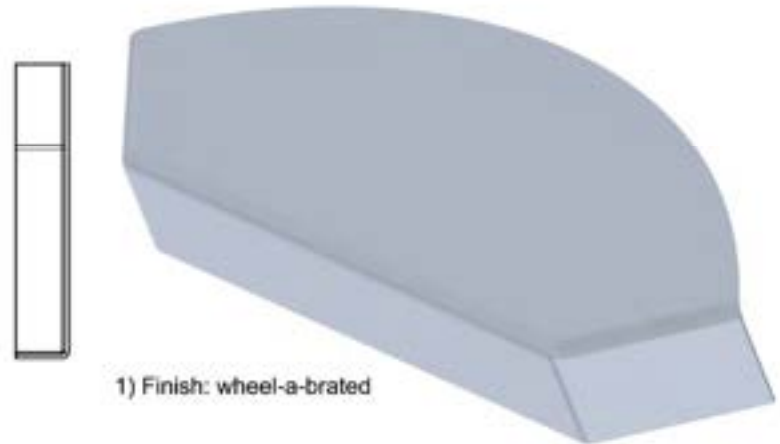
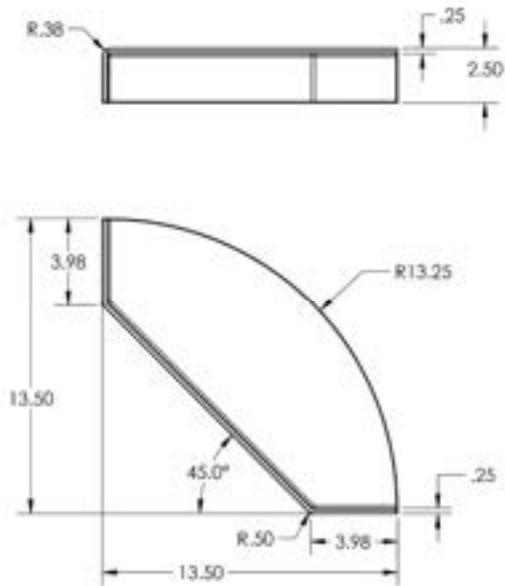
MC0102

MC0102 90d. Inside Corner Cap Casting

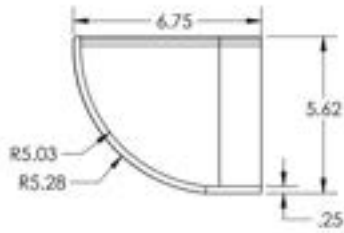


MC0103

MC0103 90d. Shelving Corner Casting



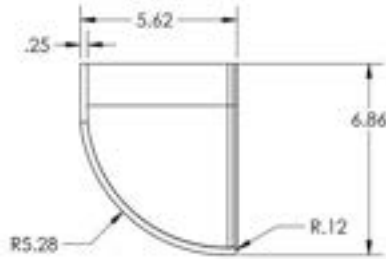
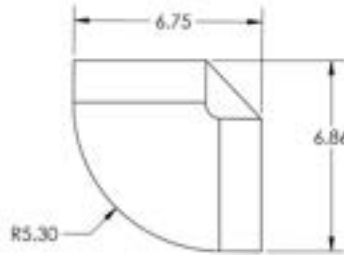
MC0104



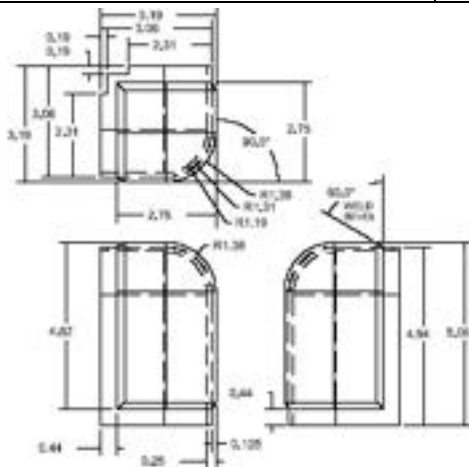
MC0104

90d. Corner Cap Casting

1) Finish: ball-burnished



MC51145



MC51145

Modular Corner (Weld in)

1) Finish: Ground and wheel-a-brated.
2) Purpose: to eliminate the need for mitering the corners of extrusions.